

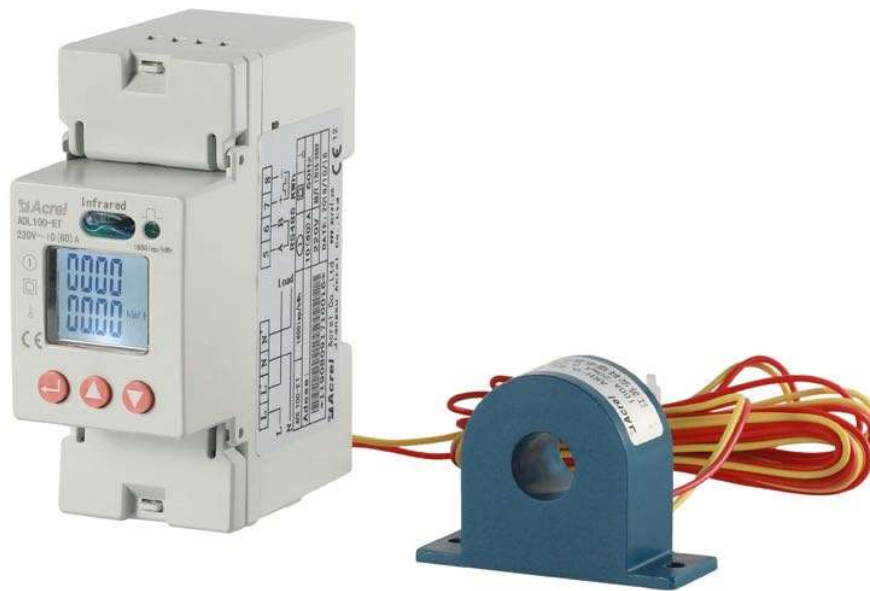


ADL100-ET/CT Single Phase Din Rail Energy Meter with CT



General

ADL100 single phase electric meter is designed for single phase active energy measurement on low voltage system, in the same time it can measure the electrical parameters like voltage, current, power and so on. There is also RS485 can be chosen. This power meter has advantages of smaller volume, high precision, good EMC, easily installing etc, All meters meet the related technical requirements of electronic power meter in the IEC62053-21、IEC62053-22 standards.



- AC220V
- 20 (100) A
- RS485(MODBUS-RTU)
- Set parameters
- LCD display
- kWh Class 1
- DIN 35 mm

Current : 20(100)A

Accuracy : kWh: Class 1.0

Frequency: 50/60HZ(Optional), range: 50HZ

Pulse output: Pulse output kWh/kvarh

Installation: DIN 35mm

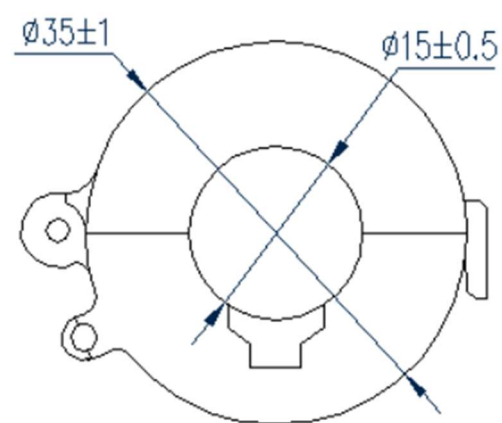
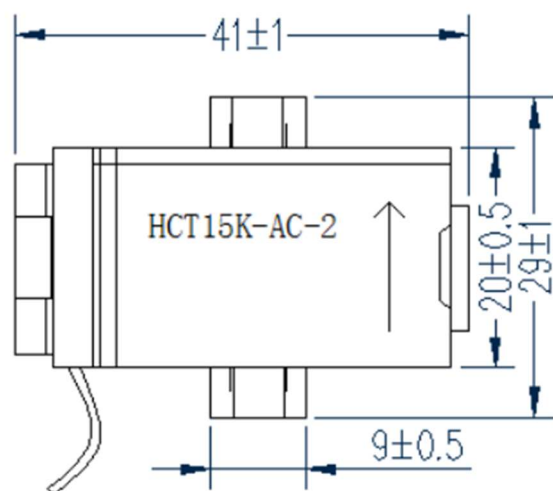
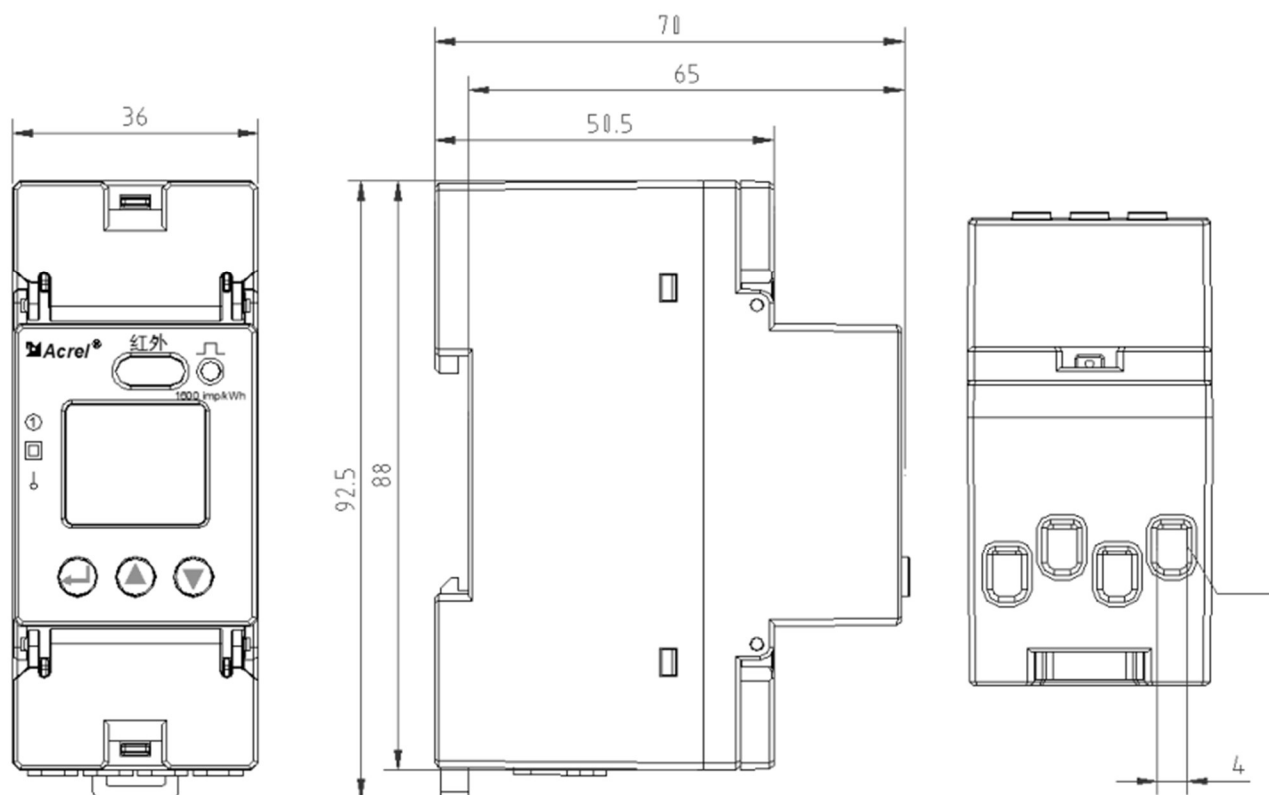
Consumption: < 10VA

Dimension(L*W*H) : 36*88*70mm

Clock error: ≤0.5s/d

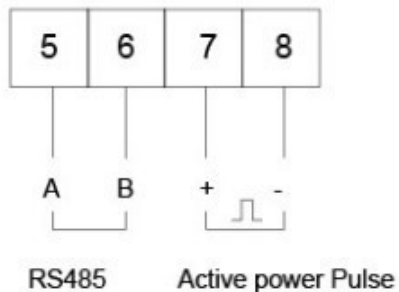
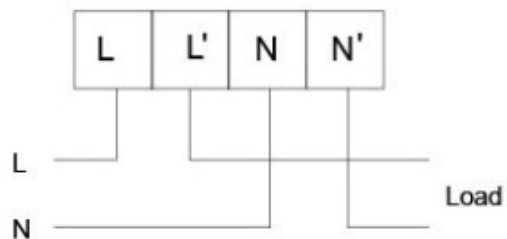
Starting current: Direct connect: 0.004Ib

Dimension

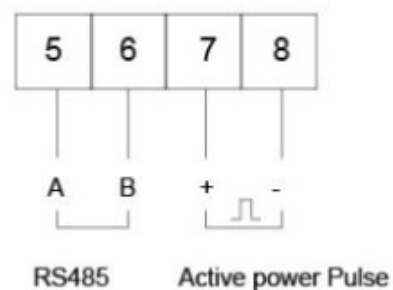
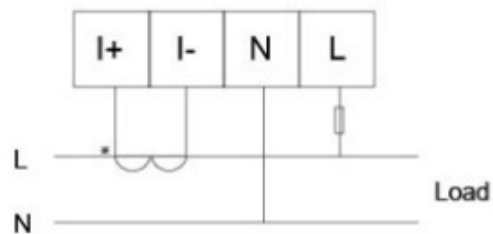


Wiring

Wiring sample of current and voltage



10(60)A specification wiring diagram



20(100)A specification wiring diagram



Parameter

Voltage	Reference voltage	AC220V
	Reference frequency	50Hz
	Consumption	<10VA(Single phase)
Current	Maximum current	60A
	Starting current	0.004Ib
	Consumption	<4VA (Maximum current)
Measurement performance	Accuracy of active kWh	Class 1
	Standards compliant	IEC 62053-21:2003
Pulse	Pulse width	80+20ms
	Pulse constant	1600imp/kWh
Communication	Interface	RS485
	Protocol	MODBUS-RTU
Outline	L*W*H(mm)	36*88*70
Environment	Temperature	Operating:-25~55℃;Storage:-40~70℃
	Humidity	≤95% (No condensation)
	Altitude	<2000m



 **Acrel**